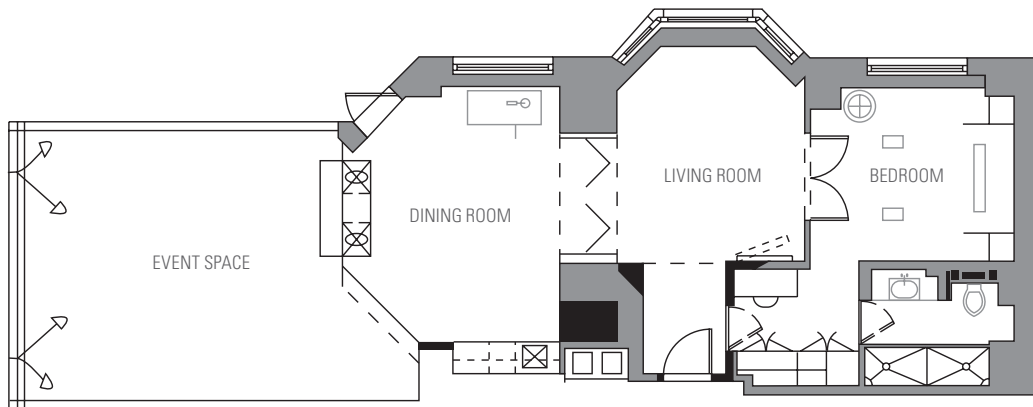


T H E L O N D O N N Y C

THE LONDON ATRIUM SUITE



Situated underneath an expansive glass atrium ceiling with panoramic views of Central Park, the Hudson River and the Manhattan skyline. Designer David Collins created 1,500 square feet of luxurious living in a rare setting with a generously proportioned living room ideal for private meetings and events from debuting fashion lines to intimate cocktail parties.



TOTAL SQ. FT.	ROUNDS	RECEPTION	CONFERENCE	CRESCENTS	U-SHAPE	CLASSROOM	THEATRE
1,500	24	40	10	—	12	10	32