



# SPECIAL EVENTS

THE L O N D O N NYC



# WE HAVE THE SPACE. LET'S FILL IT, TOGETHER.

At the epicenter of Manhattan commerce and culture, The London NYC collaborates with you to ensure flawless gatherings.

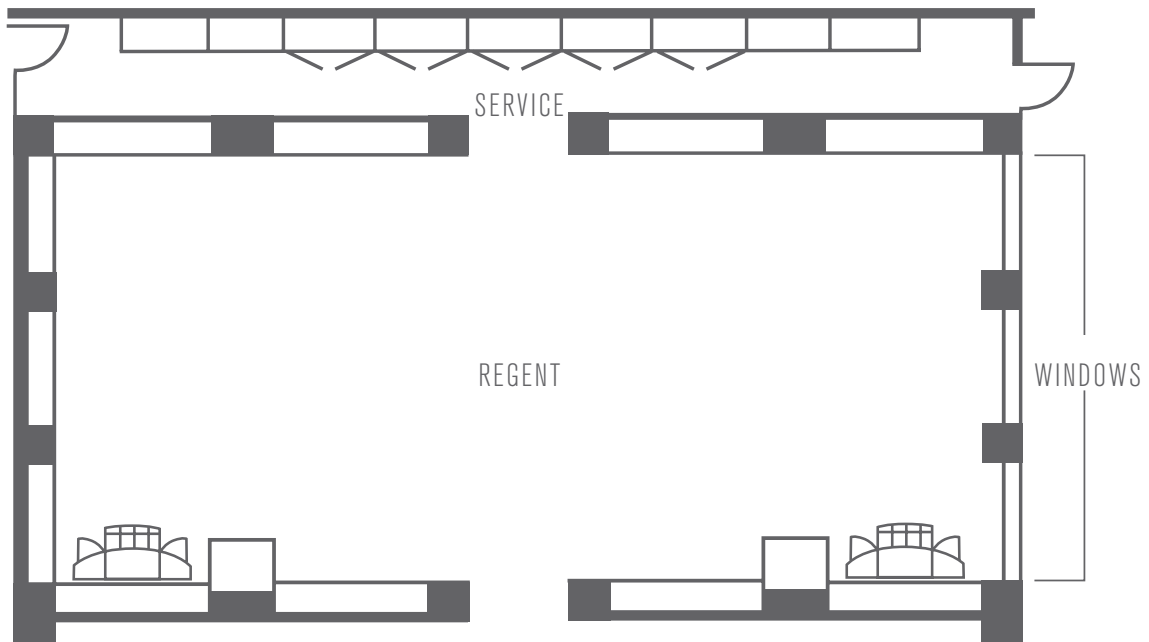
Whether your vision is formal or free-flowing, corporate or casual, The London NYC custom tailors every event we host down to the very last detail. From a small business breakfast, to a hands-on training seminar, to an elegant dinner for up to 250 guests, each event is fashioned to be a fully personalized and experience for you and your guests. Our intuitive planning team curates each event and caterers will maximize your time with clients, colleagues and guests tailoring our venues, cuisine and service to meet your vision and mission.

Room Name	Total Sq.Ft.	Dimensions W x L x H	Classroom	Theatre	U-Shape	Open Square	Conference	Rounds	Crescents	Reception
PRIVATE DINING ROOM										
REGENT PARK	1,050	25 x 42 x 12	60	100	35	40	35	90	50	100
2ND-FLOOR EVENT SPACE										
FOYER	550		-	-	-	-	-	-	-	65
GREEN PARK	1,500	21 x 66 x 10	65	120	40	46	40	80	40	125
<i>Green East</i>	400	21 x 20 x 10	15	30	10	12	14	16	12	30
<i>Green Center</i>	700	21 x 26 x 10	30	40	12	16	16	30	16	40
<i>Green West</i>	400	21 x 20 x 10	15	30	10	12	14	16	12	30
HYDE PARK	982	22 x 42 x 10	60	110	40	40	38	80	40	100
<i>Hyde North</i>	490	22 x 21 x 10	30	50	20	20	12	40	20	50
<i>Hyde South</i>	490	22 x 21 x 10	30	50	20	20	12	40	20	50
4TH-FLOOR EXECUTIVE MEETING CENTER										
GREENWICH PARK	550	-	20	30	-	-	16	20	-	40
KENSINGTON PARK	550	-	20	40	-	-	16	24	-	40
RICHMOND PARK	450	-	-	-	-	-	8	12	-	40
SHEFFIELD PARK	500	-	9	20	-	-	12	12	-	40
SIGNATURE SUITES										
ATRIUM SUITE	1,500	-	10	32	12	-	10	24	-	40
PENTHOUSE SUITE	2,500	-	20	60	-	-	30	50	-	150
LONDON SKY APT (4)	1,800	-	-	-	-	-	8	-	-	30
LONDON SKY SUITE (6)	850	-	-	-	-	-	-	-	-	20



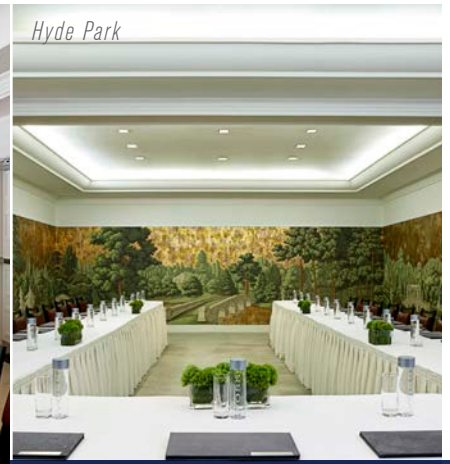
# THE REGENT PARK

Located within The London Bar & Restaurant, Regent Park boasts an elegant environment for any private dining occasion. With rotating mother of pearl and hand carved mahogany wall coverings, this space is easily transformed to accommodate events ranging from board of directors meetings to rehearsal dinners and private Sunday brunches.

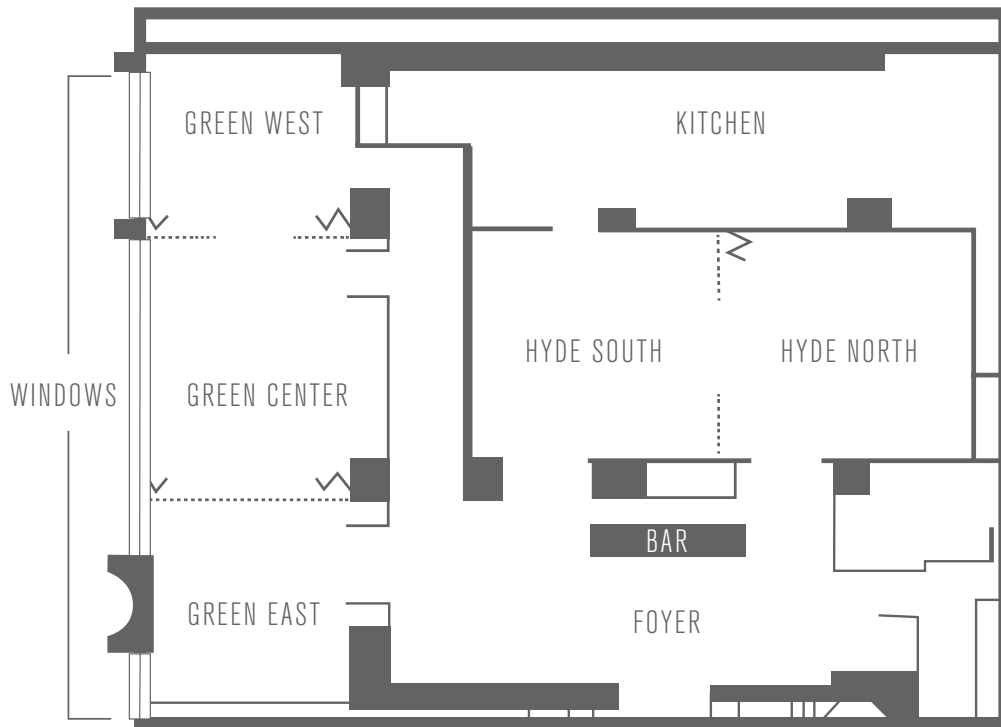


Room Name	Total Sq.Ft.	Dimensions W x L x H	Classroom	Theatre	U-Shape	Open Square	Conference	Rounds	Crescents	Reception
PRIVATE DINING ROOM										
REGENT PARK	1,050	25 x 42 x 12	60	100	35	40	35	90	50	100

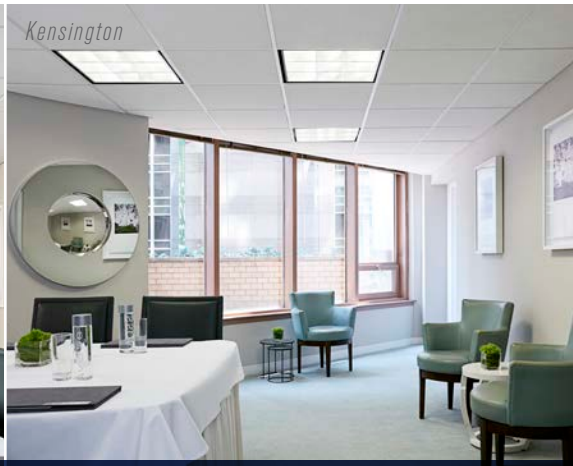




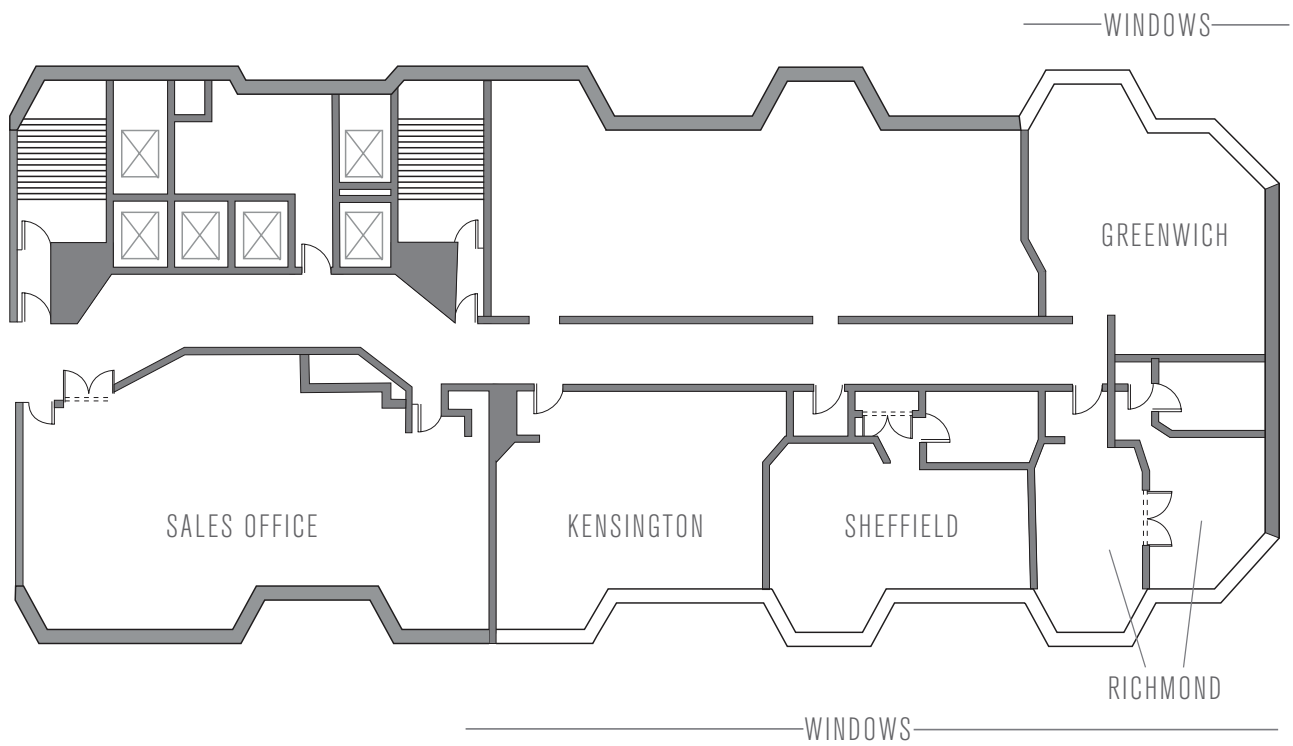
## 2ND-FLOOR EVENT SPACE



Room Name	Total Sq.Ft.	Dimensions W x L x H	Classroom	Theatre	U-Shape	Open Square	Conference	Rounds	Crescents	Reception
<b>2ND FLOOR EVENT SPACE</b>										
<b>FOYER</b>	<b>550</b>		-	-	-	-	-	-	-	<b>65</b>
<b>GREEN PARK</b>	<b>1,500</b>	<b>21 x 66 x 10</b>	<b>65</b>	<b>120</b>	<b>40</b>	<b>46</b>	<b>40</b>	<b>80</b>	<b>40</b>	<b>125</b>
<i>Green East</i>	400	21 x 20 x 10	15	30	10	12	14	16	12	30
<i>Green Center</i>	700	21 x 26 x 10	30	40	12	16	16	30	16	40
<i>Green West</i>	400	21 x 20 x 10	15	30	10	12	14	16	12	30
<b>HYDE PARK</b>	<b>982</b>	<b>22 x 42 x 10</b>	<b>60</b>	<b>110</b>	<b>40</b>	<b>40</b>	<b>38</b>	<b>80</b>	<b>40</b>	<b>100</b>
<i>Hyde North</i>	490	22 x 21 x 10	30	50	20	20	12	40	20	50
<i>Hyde South</i>	490	22 x 21 x 10	30	50	20	20	12	40	20	50



# 4TH-FLOOR EXECUTIVE MEETING CENTER

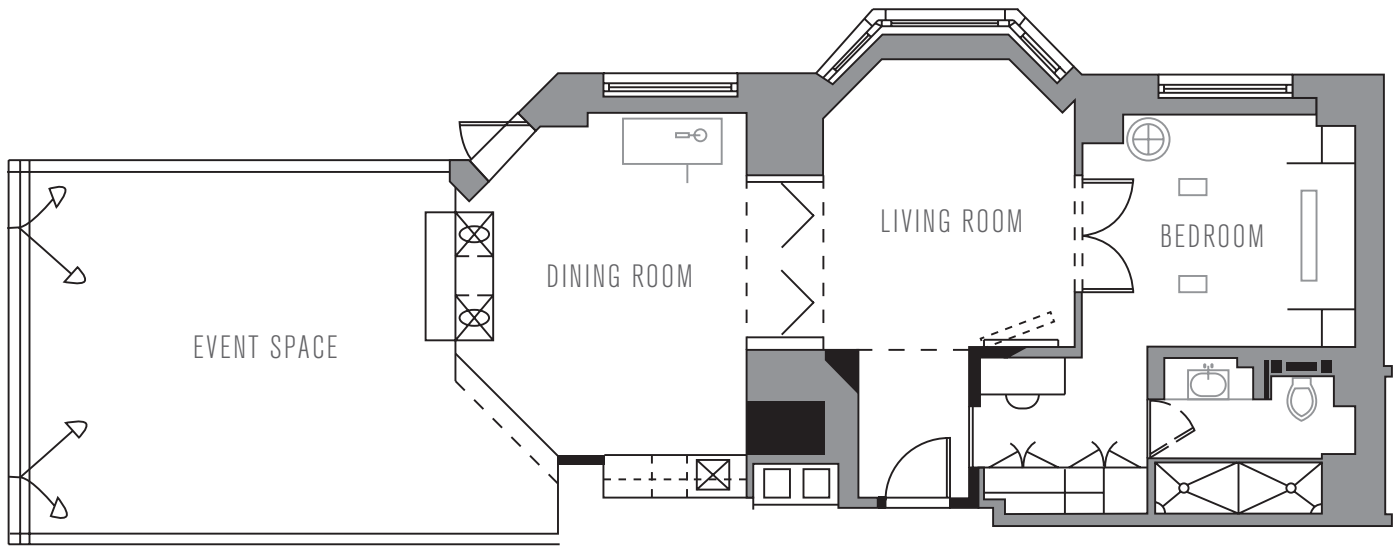


Room Name	Total Sq.Ft.	Dimensions W x L x H	Classroom	Theatre	U-Shape	Open Square	Conference	Rounds	Crescents	Reception
4TH FLOOR MEETING CENTER										
GREENWICH PARK	550	-	20	30	-	-	16	20	-	40
KENSINGTON PARK	550	-	20	40	-	-	16	24	-	40
RICHMOND PARK	450	-	-	-	-	-	8	12	-	40
SHEFFIELD PARK	500	-	9	20	-	-	12	12	-	40



# THE ATRIUM SUITE

Situated underneath an expansive glass atrium ceiling with panoramic views of Central Park, the Hudson River and the Manhattan skyline, The Atrium Suite lends a “wow” factor to every event. Designer David Collins created 1,500 square feet of luxurious living in a rare setting with a generously proportioned living room ideal for private events from debuting fashion lines to intimate cocktail parties.



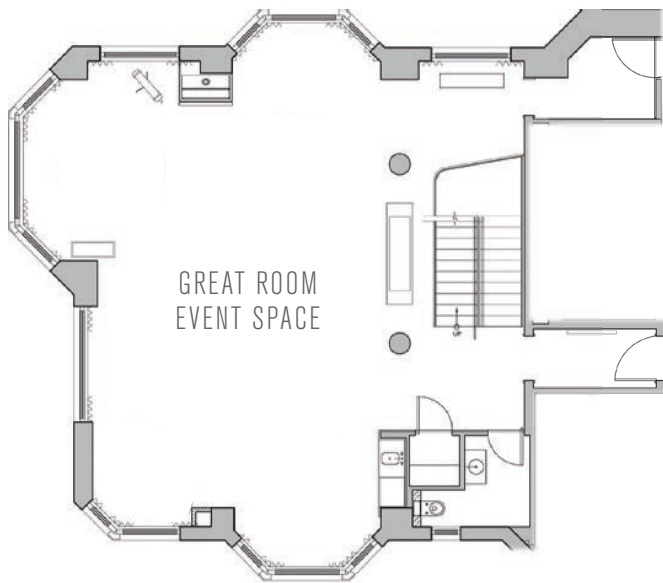
Room Name	Total Sq.Ft.	Dimensions W x L x H	Classroom	Theatre	U-Shape	Open Square	Conference	Rounds	Crescents	Reception
SIGNATURE SUITES										
ATRIUM SUITE	1,500	-	10	32	12	-	10	24	-	40



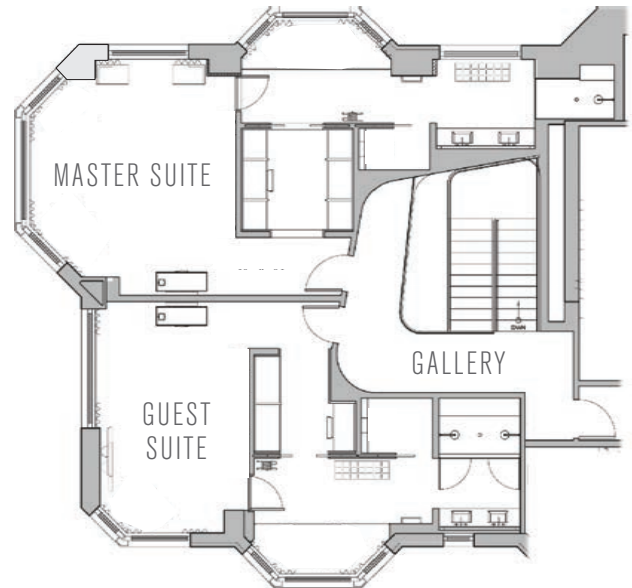
# THE PENTHOUSE

The London Penthouse offers 180-degree views of Central Park, the Hudson River, the George Washington Bridge and the Manhattan skyline. The expansive duplex affords 2,500 square feet of living, dining and entertaining space – a blank canvas for creating your own personal living experience, whether a memorable meeting or social gathering.

53RD FLOOR



54TH FLOOR



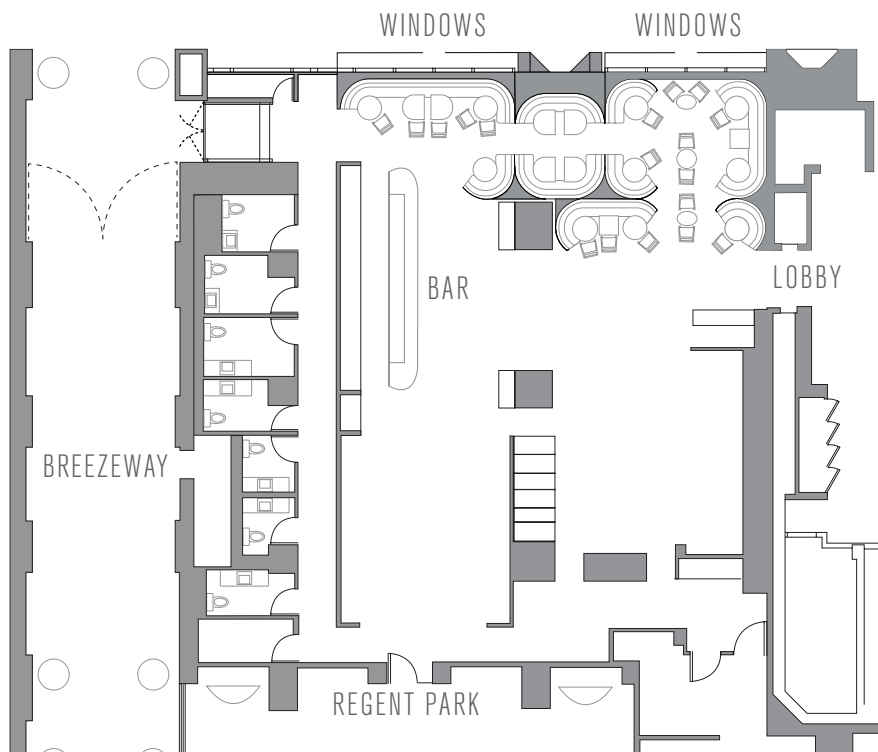
Room Name	Total Sq.Ft.	Dimensions W x L x H	Classroom	Theatre	U-Shape	Open Square	Conference	Rounds	Crescents	Reception
SIGNATURE SUITES										
PENTHOUSE SUITE	2,500	-	20	60	-	-	30	50	-	150





# THE LONDON BAR AND RESTAURANT

Whether it's a bespoke wedding reception or an elegant soiree, gatherings at The London Bar & Restaurant far exceed the usual. Perfectly poised for hosting 100 to 250 guests, this stylish bar and restaurant offers over 3,300 square feet of versatile event space and culinary excellence in the heart of Midtown Manhattan.



Room Name	Total Sq.Ft.	Dimensions W x L x H	Classroom	Theatre	U-Shape	Open Square	Conference	Rounds	Crescents	Reception
BAR AND RESTAURANT										
	3,300	-	-	-	-	-	-	-	-	250





T H E L O N D O N N Y C

THE LONDON NYC | 151 WEST 54TH STREET, NEW YORK, NY 10019 | [THELONDONNYC.COM](http://THELONDONNYC.COM)  
888.LONDONYC | 212.307.500 | EMAIL: [SALES@THELONDON.COM](mailto:SALES@THELONDON.COM)